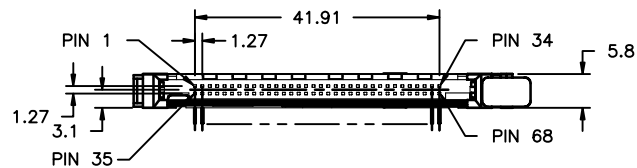
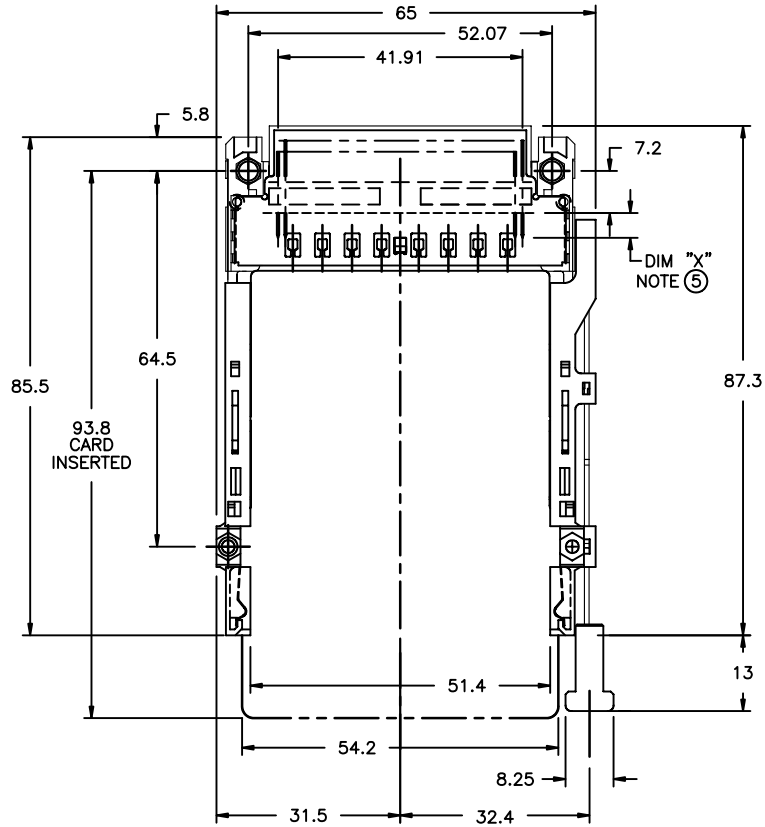
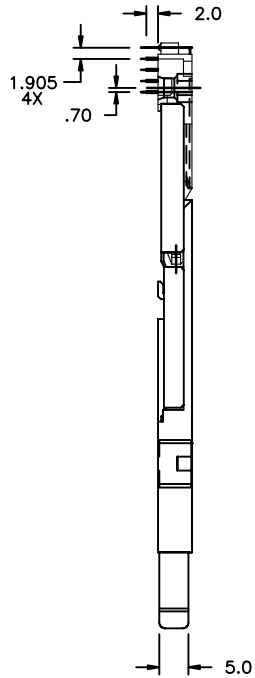


All rights strictly reserved. Reproduction or issue to third parties in any form whatever is not permitted without written authority from the proprietor. Property of FCI. Copyright FCI.

Tous droits strictement reserves. Reproduction ou communication a des tiers interdite sous quelque forme que ce soit sans autorisation ecrite du proprietaire. Propriete de c FCI. Droits de reproduction FCI.

PRODUCT NO.
72206-000CA/000CALF
NOTE ⑤



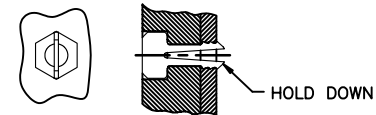
NOTES:

- 1 8mm MIN CARD EJECT.
- 2 PUSH-ROD TRAVEL: 9.5mm
- 3 MATERIAL:
 - 3.1 HEADER ASSY: PLASTIC HOUSING: LCP UL94V-0 BLACK - ABOVE PCB
PIN: PHOSPHOR BRONZE
 - 3.2 EJECT MECHANISM ASSY: PLASTIC GUIDE: POLYPHTHARAMID UL94V-0 BLACK
PLASTIC PUSH-ROD BUTTON: POLYPHTHARAMID UL94V-0 BLACK
COVER PLATE, EJECT PLATE, LINK ARM, PUSH ROD: STAINLESS STEEL
EMI CONTACT: PHOSPHOR BRONZE
- 4 FINISH (PIN)
UNDER PLATING: 0.5um MIN Ni
CONTACT AREA: 0.1um MIN GOLD OVER
0.5um MIN Pd-Ni
SOLDER TAIL: 2.5umMIN Sn-Pb FOR TIN LEAD OPTION
2.5umMIN PURE TIN FOR LEAD FREE OPTION

⑤ DIM "X"

4.25±0.1	3.5±0.1	5.0±0.1
OTHERS	36,67	1,17,34,35,51,68

- 6 RECOMMENDED HOLD DOWN - 2mm SCREWS (95121-001) AND NUTS (92869-001).
RECOMMENDED SCREW TORQUE: 1.0 TO 1.5 MAX in-lbs. (1.2-1.7 cm-kgs).
- 7 SEE SHEET 3 FOR PCB LAYOUT INFORMATION.
- ⑧ ADD "H" TO PART NUMBER FOR OPTIONAL HOLD DOWN (2 PER EJECT MECHANISM).



- 9 IF LEAD FREE P.N.THE HOUSING WILL WITHSTAND EXPOSURE TO 260°C PEAK TEMPERATURE FOR 10 SECONDS IN A WAVE SOLDER APPLICATION WITH A 1.00MM MINIMUM THICK CIRCUIT BOARD.
- 10 IF LEAD FREE P/N.THE PRODUCT MEETS EUROPEAN UNION DIRECTIVES AND OTHER COUNTRY REGULATIONS AS DISCRIBED IN GS-22-008
- 11 LEAD FREE P/N PACKAGING MEETS GS-14-920 SPECIFICATION

mat'l. code				tolerances unless otherwise specified		CUSTOMER COPY	Electronics www.fciconnect.com		
ltr	ecn no	dr	date	linear	.X±.3	projection	title		
A	V60726	RHG	4/29/96		.XX±.13			R/A CARDBUS SINGLE DECK ASSEMBLY	
B	V60810	RHG	5/24/96	angles	.XXX±.051			product family MCS	
C	V61089	RHG	7/2/96		0° ±2'			size dwg no	
D	V70389	RHG	3/25/97	dr	R.GRAPE 4/29/96			code	
E	V12164	TFG	8/16/01	enr	D.BRANN 4/29/96			-	
F	N05-0054	WB	03/02/05	chr	D.BRANN 4/29/96			sheet	
sheet		revision		F	F			1 of 3	
index		sheet		1	2				
				F	F				
				1	2				
				3					

1 | 2

3

4

PRODUCT NO.
72206-100CA/100CALF
NOTE ⑧

Tous droits strictement reserves. Reproduction ou communication a des tiers interdite sous quelque forme que ce soit sans autorisation ecrite du proprietaire. Propriete de c FCI. Droits de reproduction FCI.

All rights strictly reserved. Reproduction or issue to third parties in any form whatever is not permitted without written authority from the proprietor. Property of FCI. Copyright FCI.

Dimensions: 65, 52.07, 41.91, 7.2, 5.8, 87.3, 64.5, 85.5, 13, 51.4, 54.2, 8.25, 32.4, 31.5.

NOTE ⑤: DIM "X"

93.8 CARD INSERTED

Dimensions: 2.0, 1.905 4X, .70, 5.0

PIN 1, PIN 34, PIN 35, PIN 68

Dimensions: 5.8, 41.91, 1.27, 3.1, 1.27

A

A

B

B

mat'l. code				tolerances unless otherwise specified		CUSTOMER COPY	Electronics www.fciconnect.com	
ltr	ecn no	dr	date	linear	.X±.3		projection	
F					.XX±.13			
					.XXX±.051			
				angles	0° ±2'	MM scale 1:1		R/A CARDBUS SINGLE DECK ASSEMBLY product family MCS size dwg no 72206 sheet 2 of
				dr	R.GRAPE 4/29/96			
				enr	D.BRANN 4/29/96			
				chr	D.BRANN 4/29/96			
				appd	D.BRANN 4/29/96			
sheet index	revision sheet							cage code

1 | 2

3

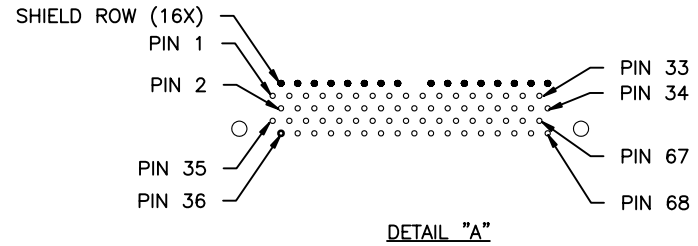
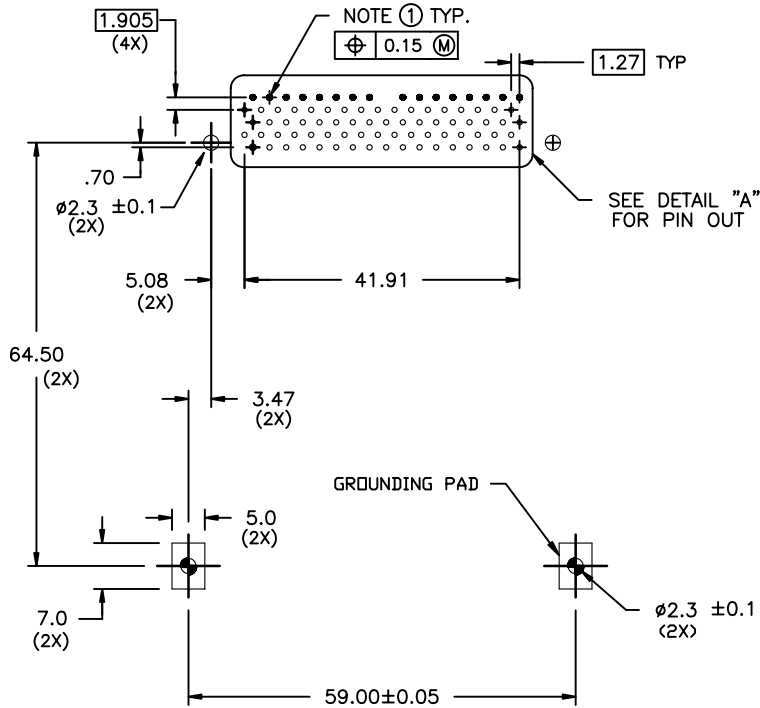
4

ACAD

PDM: Rev:F

STATUS: Released 26 Printed: Feb 06, 2008

FCI



P.C.B. LAYOUT

NOTES:

- ① RECOMMENDED DIAMETER IS $\varnothing 1.0$. FOR PROCESSES USING PASTE REFLOW, HOLE MAY BE AS SMALL AS $\varnothing 0.79$.
- 2 ALL TOLERANCES ± 0.15 UNLESS NOTED.

mat'l. code				tolerances unless otherwise specified		CUSTOMER COPY		 FCI www.fciconnect.com		
ltr	ecn no	dr	date	linear	.X±.3		projection	title		
F					.XX±.13				R/A CARDBUS SINGLE DECK ASSEMBLY	
					.XXX±.051				product family MCS	
				angles	0° ±2'		 MM	size		
				dr	R.GRAPE	4/29/96		A4		72206
				enr	D.BRANN	4/29/96	scale		1:1	
				chr	D.BRANN	4/29/96	sheet index		3 of	
				appd	D.BRANN	4/29/96	revision sheet			
sheet index	revision sheet									